

SALE
of the
Season



ADVENTURE LADAKH BIKING

FIXED DEPARTURE TOURS 2024



SRINAGAR LEH MANALI DELHI

10 NIGHTS AND 11 DAYS



International Youth Club
Your Best Travel Partner

HIGHLIGHTS

- Complimentary Royal Enfield Himalayan Bike
- Total distance covered during the tour - approx. 2,000 KM.
- Deluxe Hotels and Swiss Camps with attached bathrooms for Solos, Couples, Friends, and Family.
- 10 Nights and 11 Days
- Experienced Road Captains, Mechanics and Support Staff
- Bike Permits and Inner Line Permits
- Bike ride on the highest motorable passes in the world - Khardung La and Chang La
- Turtuk Village, Nubra Valley, Pangong Tso

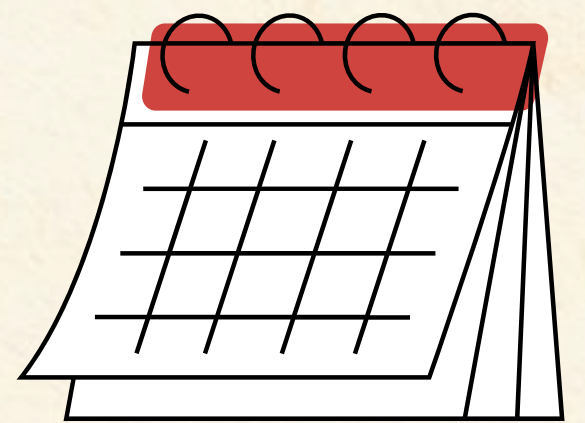
SHORT ITINERARY:

- Day 01: Arrival in Srinagar
- Day 02: Srinagar to Kargil
- Day 03: Kargil to Leh
- Day 04: Leh to Nubra Valley
- Day 05: Nubra Valley to Turtuk Village to Nubra Valley
- Day 06: Nubra Valley to Pangong Tso
- Day 07: Pangong Leh to Leh
- Day 08: Leh to Sarchu
- Day 09: Sarchu to Manali
- Day 10: Manali Departure
- Day 11: Arrival in Delhi



FIXED DEPARTURE DATES

- Friday, May 24, 2024
- Sunday, June 9, 2024
- Wednesday, June 12, 2024
- Friday, June 28, 2024
- Monday, July 1, 2024
- Wednesday, July 17, 2024
- Saturday, July 20, 2024
- Monday, August 5, 2024
- Thursday, August 8, 2024
- Saturday, August 24, 2024
- Tuesday, August 27, 2024
- Thursday, September 12, 2024
- Sunday, September 15, 2024





● Day 01: (Srinagar) Arrival in Srinagar 5,200 ft

- On landing at the Srinagar Airport, transfer to the pre-booked hotel for an overnight stay in Srinagar.
- In the evening, our tour captain will give you a little brief about the ride, itinerary, etc.
- Dinner & Overnight Stay at Srinagar





Day 02: (Kargil) Srinagar to Kargil

8,780 ft | 220 KM | 6-7 hr

- After breakfast, travel to Kargil, the main battleground during the Kargil War 1999.
- En route, you will meander through the thrilling Zojila pass and Drass, the second coldest inhabited place on earth.
- Visit the Kargil War Memorial and get mesmerized by the patriotic theme. Also enjoy some time at the Tiger Hills and other famous peaks in Kargil.
- You will reach Kargil by evening, on arriving check in to the hotel and deposit your bike keys with the road captain.
- Relax for the day and spend time with your friends.
- Bikes, Breakfast, Dinner & Overnight Stay in Kargil



Day 03: (Leh) Kargil to Leh

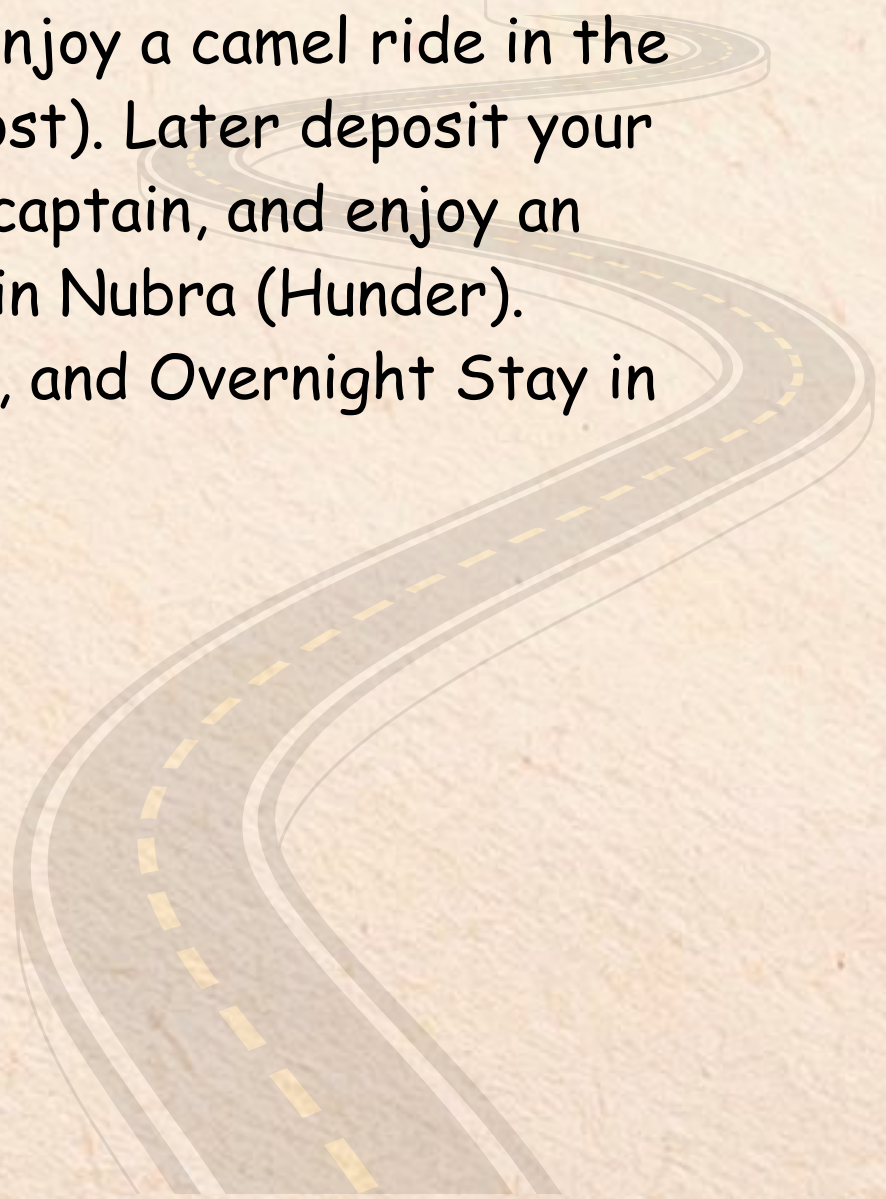
11,600 ft | 240 KM | 6-7 hr

- As morning gilds over the skies, after breakfast, you will head towards Leh.
- On the way, you will visit the Dha-Hanu village, where the last race of Indo-Aryans resides. You will be amazed to see people adorned with jewelry and flowers.
- En route, you will also see the beautiful confluence of Zaskar and Indus River, the intriguing phenomenon of Magnetic Hills, and the divine visit at Gurudwara Pather Sahib.
- As you reach Leh, deposit your bike keys with the road captain and relax for the day.
- Bikes, Breakfast, Dinner, and Overnight Stay in Leh



Day 04: (Nubra) Leh to Nubra Valley 10,000 ft | 160 KM | 5-6 hr

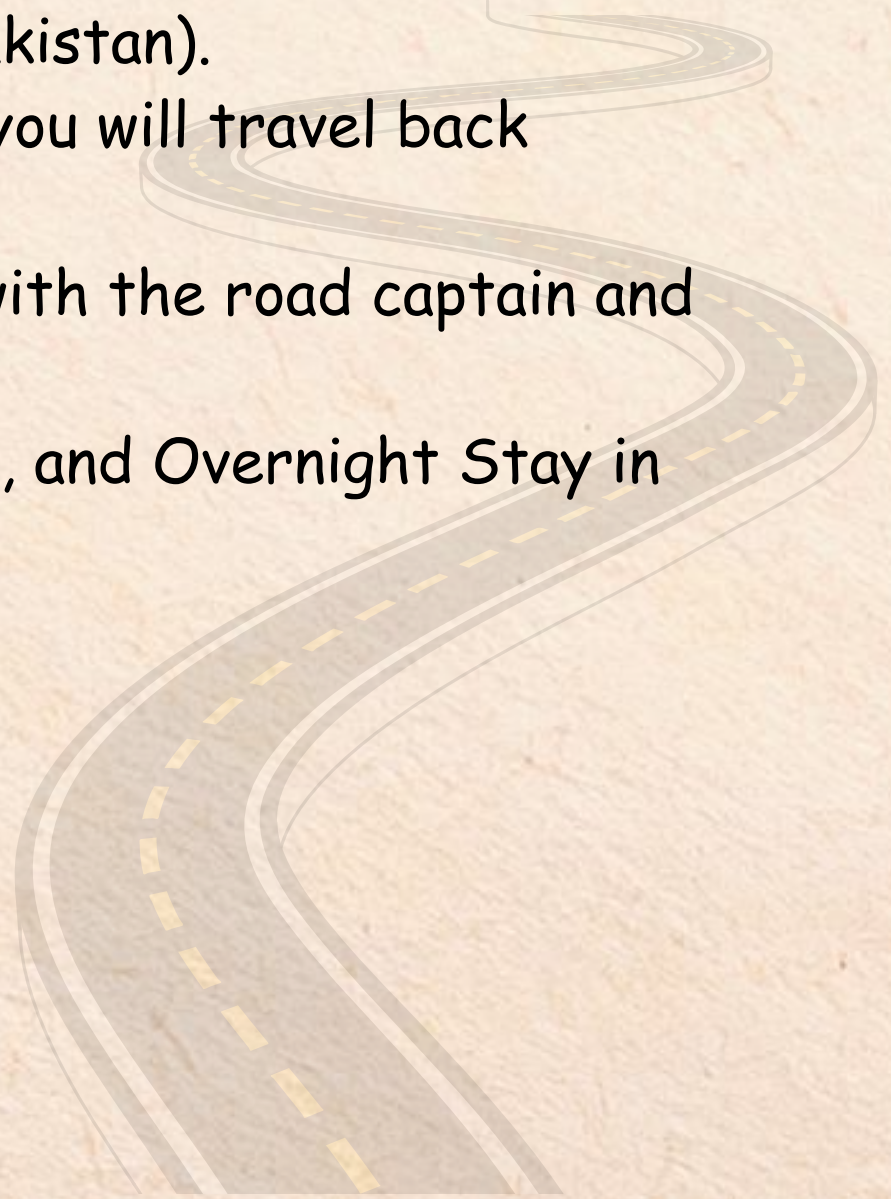
- Wake up to a refreshing morning and enjoy an awesome bike ride as your engines roar through the Nubra Valley, a cold desert with vast landscapes and mountain ranges.
- Feel the thrill of crossing one of the World's Highest Motorable Pass, Khardung La.
- On your way to Nubra, stay and enjoy the beautiful Buddha Statue and Diskit Monastery.
- Once you reach Nubra, enjoy a camel ride in the sand dunes (additional cost). Later deposit your bike keys with the road captain, and enjoy an overnight stay provided in Nubra (Hunder).
- Bikes, Breakfast, Dinner, and Overnight Stay in Nubra Valley





Day 05: (Nubra) Nubra Valley to Turtuk Village to Nubra Valley || 9,850 ft | 196 KM | 8-9 hr

- After the sun peeps out, you will pack your bags as you will leave for Turtuk village which was under Pakistan before 1971.
- Nestled in the Nubra tehsil, from the Leh town, on the banks of the Shyok River, it is the last village before LOC (Thang Village). With stunning beauty throughout the valley, you will be blessed with views you might have not seen before like K2 Mountain range (in Pakistan).
- After exploring Turtuk you will travel back towards Nubra.
- Deposit your bike keys with the road captain and enjoy an overnight stay.
- Bikes, Breakfast, Dinner, and Overnight Stay in Nubra Valley





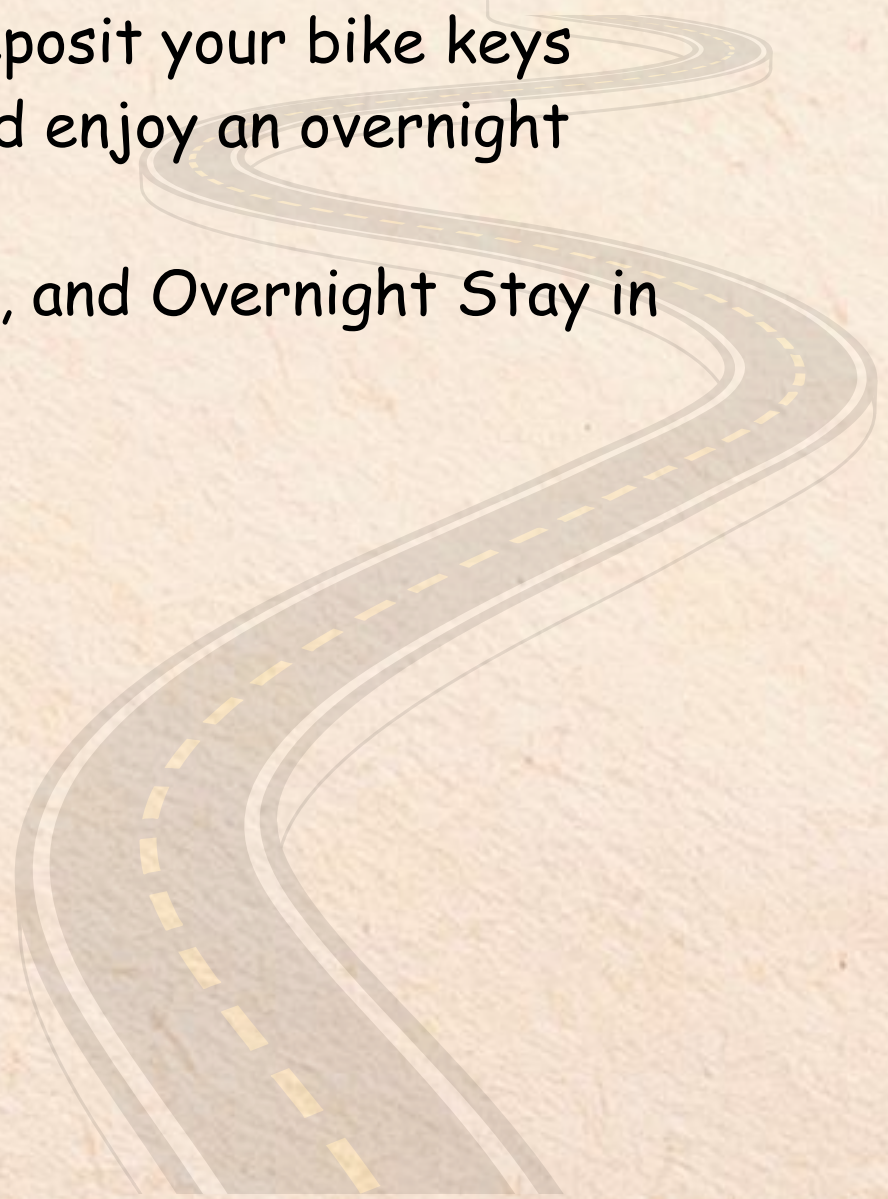
Day 06: (Pangong) Nubra Valley to Pangong Tso 14,000 ft | 160 KM | 7-8 hr

- Prepare for another day of a daring off-roading experience as you traverse through untamed paths in the high mountains.
- The route leads to the beautiful Pangong Tso (lake) via Shyok river or Wari La Pass. It is quite challenging yet thrilling and is generally used by the army.
- On arrival, train your sights on the enchanting blue lake. (*In case Pangong Tso is closed then we shall ride back to Leh and do the day excursion to Pangong Tso on the next day in SUV/tempo traveler.)
- Once you reach Pangong Tso, enjoy the picturesque lake and magnificent views surrounding you. Later, deposit your bike keys with the road captain, and enjoy an overnight stay.
- Bikes, Breakfast, Dinner, and Overnight Stay in Pangong Tso



Day 07: (Leh) Pangong Tso to Leh via Chang La 11,600 ft | 160 KM | 5-6 hr

- In the morning, get set for yet another journey exhilarating ride as you head back to Leh, via Chang La pass one of the world's highest mountain pass.
- En route, stop at the famous Druk White Lotus School, featured in the blockbuster Bollywood movie '3 Idiots'.
- If time permits, you can even visit Shey and Thiksey Monasteries. Deposit your bike keys with the road captain and enjoy an overnight stay.
- Bikes, Breakfast, Dinner, and Overnight Stay in Leh





Day 08: (Sarchu) Leh to Sarchu **14,100 ft | 250 KM | 6-7 hr**

- Leave for Sarchu, after enjoying the breakfast. Cross the high passes like Nakee La, Lachung La, and Tanglang La.
- Say goodbye to the beauty of Ladakh and travel along the curvy roads to Himachal Pradesh.
- Reach Sarchu, deposit your bike keys with the road captain and stay for the night.
- Bikes, Breakfast, Dinner, and Overnight Stay at Swiss Camps in Sarchu.





Day 09: (Manali) Sarchu to Kullu Manali

6,700 ft | 200 KM | 5-6 hr

- This is the final leg of our ritual road trip.
- We start our day early as we leave for Manali. The route is slightly rough, so this day we shall try and cover the maximum distance with minimum stopovers.
- On the route, we will enjoy the beauty of Kullu Manali. As we arrive in Manali, celebrate the completion of our epic road journey and deposit your bike keys with the road captain.
- Bikes, Breakfast, Dinner, and Overnight Stay in Kullu Manali



Day 10: Kullu Manali to Delhi Departure 540 KM | 14-15 hr

- The trip ends today after breakfast, we check out of the hotel at 10 AM and explore the nearby cafes with our fellow travelers, reliving and relishing the beautiful journey that was once a dream and how it has become not just an achievement, but a chronicle!
- Leave for Delhi in the evening via an overnight Volvo bus, taking the memories worth a lifetime and friendships to cherish forever!
- Breakfast, and Overnight Volvo Journey

Day 11: Arrival in Delhi

- Trip Ends



INCLUSIONS:

1. Complimentary Himalayan Bike with Fuel and Helmet.
2. Stay in pre-booked Deluxe hotels on triple sharing (double sharing for couples) at Leh, Kullu Manali, Kargil, and Srinagar.
3. Comfy stay in Swiss Camps with attached washrooms on triple sharing (double sharing for couples) at Nubra Valley, Pangong Tso, and Sarchu.
4. Buffet Breakfast will be available from Day 2 till Day 10 and Buffet Dinner will be available from Day 1 till Day 9.
5. The Bikes will be provided from Day 2 in the morning till Day 9 in the evening.
6. Bike permits and Inner Line Permits for all travelers.
7. All Permits for the highest motorable passes in the world - Khardung La and Chang La.
8. Fuel will be provided as per the route mentioned in the itinerary.
9. Services of an Experienced Road Captain and Motorbike Mechanic from Day 2 in the morning till Day 9 in the evening.
10. Services of the backup seat in a vehicle for a group of more than 10 motorbikes are restricted for exigencies
11. First Aid Medical Kit and Oxygen Cylinder at dispersal with the Road Captain
12. Facility to carry luggage in a separate vehicle restricted to 1 Rucksack/Duffle Bag of 60 Liters per Traveler (kindly refer schedule of charges for additional luggage).
13. Pre-booked Luxury Semi-sleeper Volvo Seats for travelers from Manali to Delhi on Day 10.
14. Online Certificate on successful completion of the trip.



EXCLUSIONS:

1. Personal expenses like Telephone, Laundry, Tips, and Table Drinks, etc.
2. Any type of Insurance - Medical, Accidental, and Theft.
3. Any Airfare / Rail fare other than what is mentioned in "Inclusions".
4. Pick-up or Drop - Airport, Railway station, or Bus Stop
5. Cost of any spare part which will be used due to the accidental damage incurred when the motorbike is in rider's possession.
6. In case Motorbike is dropped on the way - The cost incurred to transfer/tow, vehicle servicing or maintenance cost.
7. Any lunch and other meals not mentioned in package inclusions
8. Security deposit per motorbike of Rs. 10,000/- for accidental damages or dropping back the bike if in case you leave the bike in between the route before the end date of the trip.
9. Parking, Monastery, and Monument entry fees during sightseeing.
10. Any cost incurred due to extension, change of itinerary due to natural calamities, road, blocks, vehicle breakdown, union issues, and factors beyond our control
11. Additional accommodation/food cost incurred due to any delay
12. Applicable GST
13. Anything that is not mentioned in the Inclusion sections



ACCOMMODATIONS

Destination	Hotel / Camps
Leh	Hotel Mandala / Hotel Karakoram / Hotel Horpo Chubi / Similar
Nubra	River Valley Camps / Dream Villa Cottage / Thomas Camps / Similar
Pangong	100 Sky Camps / P3 Camps / Pangong Cottage Full Moon / Panaroma Cottage / Similar
Srinagar	Palazzo Zafferano / Hotel Twin Tower / The Triden / Similar
Kargil	Hotel White Castle / Hotel The Indian Kargil / Similar
Sarchu	Garjha Hills Camps / Gold Drop Camps / Similar
Jispa	Garjha Hills / Jispa Journey Camps / Similar
Kullu Manali	Grand Krisa Resort and Spa / Hotel Rock Manali / Hotel Moniker / Meridian Adventure Camps / Similar

*Stay will be on Triple sharing basis and Twin sharing only for couples.



NOTES

- Day 00 - The volvo will start between 5PM to 10 PM as per the availability scheduled
- Please make yourself available before 5 PM in Delhi at reporting point which could be Majnu Ka Tila or RK Ashram Metro Station.
- The check-in time is 12 noon/early check-in subject to availability of the room.
- We have the right to cancel the group if we do not get the minimum strength of bikes in any group.
- If there are any additional expenses due to bad weather or any other reason beyond the control of the tour operator on account of a hotel stay, transportation, and meals, etc. extra bill will be raised. Neither International Youth Club nor the participating partners/hotels will be responsible for the additional expenses.
- International Youth Club is not responsible for any change in itinerary due to reasons beyond our control like change in flight and train schedule, cancellation of flights/trains, political disturbances, natural phenomenon, etc...
- If any group member wants to leave the group in-between the tour then he/she will not be eligible for any refund and has to pay the cost for transportation of bike from point of leaving the tour till the tour endpoint.
- Group members would have to get their own riding gears. Wearing a helmet, carrying a valid ID proof & Driving license is mandatory.
- All guests will be responsible for the safety and security of their own luggage. We will not be at all responsible for the damage / missing / lost luggage. So carry a small daypack bag to carry all the expensive things with you.
- Compensation for any damage/accident done by you during the tour to others property/person would be directly payable by you.
- Due to any unforeseen weather conditions, road blockage, snowfall, rain, storm, the tour may continue to operate in tempo traveler instead of bikes.
- Foreign Nationals have to pay separately on their own for the permits for Khardungla and Pangong Tso.
- Basic First Aid Kit - It's advised that one should bring his/her own medicines which are known and suitable to him.
- Road Captain will be responsible to manage the group by taking all safety measures. The group has to follow him to make the tour a success.
- We provide a well-experienced and skilled Royal Enfield Mechanic with spare parts and tools. They are well trained to handle large groups.
- The spares used on the way will be chargeable. Backing vehicle - Bolero/Camper/Xylo/Innova/tempo for mechanical and medical support.
- In case of an emergency, if any rider is feeling uneasy then he can sit in it and the mechanic will ride the bike.
- Only one rucksack/backpack of 60 liters will be adjusted as it will be having tools and spares too.

COMMERCIALS

Package Variant	Package Amount	Early Bird Discount	Amount Per Person
2 Person 1 Bike	34500	2000	32500
1 Person 1 Bike	44500	2000	42500
Seat in Coach	34500	2000	32500
Own Bike / Car & Fuel	26500	2000	24500

plus 5% GST

Optional Add-ons	Amount
Accessories	
Knee Pads and Elbow Guards for entire tour package	Rs.750/- Per Person
Riding Gloves for entire tour package	Rs.250/- Per Person
Riding Jacket for entire tour package	Rs.3,000/- Per Person
Combo Offer (Knee Pads + Elbow Guards + Riding Gloves + Riding Jacket) for entire package Knee Pads: Rs.750/- + Riding Gloves: Rs.250/- + Riding Jacket: Rs.3,000/- = Total: Rs.4,000/- Discount: Rs.1000/- Amount Payable: Rs.3,000/-	Rs.3000/- Per Person
Bike Upgrades for Extra Day	
350CC Royal Enfield without Fuel for Extra Day	Rs.1500/- Per Bike/Per Day
500CC Royal Enfield without Fuel for Extra Day	Rs.2,000/- Per Bike/Per Day
Royal Enfield Himalayan without Fuel for Extra Day	Rs.2,500/- Per Bike/Per Day
Accommodation and Occupancy	
Extra luggage, other than the allowed one 60 liters of rucksack/backpack	Rs.500/- Per Bag/Per Day
Additional Accommodation for Extra Night in hotel on double or triple sharing basis	Rs.2,000/- Per Person/Per Night
Upgrade to Double Occupancy supplement in hotel and camps for entire tour package	Rs.7,500/- Per Person
Upgrade to Single Occupancy supplement in hotel and camps for entire tour package	Rs.15,000/- Per Person

**Subject to availability at the time of payment.*

GALLERY



BOOKING PROCESS

Our participation process is very simple. You may book online to reserve your seat or call us at **7827956056** between 09:00 AM to 09:00 PM on any working day. Alternatively, you may email us at **ankit@internationalyouthclub.org** for booking and assistance.

To book your seat, kindly make a payment of Rs.2,500/- per person.

You may Book Offline through NEFT or Direct Transfer by making the payment in the below bank account:

Account Name: International Youth Club

Account No.: 50200065659460

IFSC Code: HDFC00000043

Account Type: Current

Branch Name: Saket, New Delhi



7827956056

GSTIN 07AADCI7347G1ZH || PAN AADCI7347G

***While booking check-out our EMI options on your Debit and Credit Card.**

You need to email NEFT/Transfer/Proof of deposit details at **info@internationalyouthclub.org** along with Expedition Name, Date of Reporting, Participant's- Name, Mobile, Email, DOB, City and Gender in order to send you the confirmation within 48 working hours from our side.

CALL 7827956056 or Email at **ankit@internationalyouthclub.org** for bookings and reservations.

****The Amount will be forfeited in case of delay in payment according to the schedule.**



INTERNATIONAL YOUTH
CLUB

+91 78279 56056



7827956056@okbizaxis

Payment Policy:

For Ground Package

- Booking Amount: Rs.2,500/-
- 46 Days or more before the Date of Travel: 25% of the Total Cost
- 31 - 45 Days before date of departure: 50% of Total Cost
- 15 - 30 Days before date of departure: 100% of Total Cost

Important: The booking stands liable to be canceled if 100% payment is not received less than 15 days before the Date of Travel. The received amount will be forfeited.

For Flight Tickets

- 100% Amount of flight tickets at the time of flight booking.
- Any rescheduling, cancellation, and refunds of flight tickets shall be as per respective airlines rules.

Cancellation Policy:

We would love to host you, but in case you are unable to travel as planned and need to cancel your booking, do not worry. Our simple cancellation process makes sure you receive a quick confirmation and fast Credit Voucher.

- Cancellation made within 30 to 15 Days from the Date of Travel - Credit Voucher worth 50% of Paid Amount
- Cancellation made within 15 Days from the Date of Travel - No Refund on the Paid Amount

The applicable Credit Voucher will be sent to you on your registered email id within 7 to 10 working days from the date of Cancellation. Cancellation will only be accepted on Email at ankit@internationalyouthclub.org.

- The Credit Voucher shall be valid for one year from the Date of Cancellation.
- The Credit Voucher can be redeemed against the equivalent or higher amount of the booked package amount.

Rescheduling Policy:

In case you are unable to travel as planned and need to reschedule your date of travel:

- Before 15 Days from the Date of Travel - One-time Complementary.
- Within 15 Days from the Date of Travel - The cost of rescheduling needs to be paid by the guest subject to amendment charges from hotels and transporters.
- Rescheduling will only be accepted on Email at ankit@internationalyouthclub.org.



INTERNATIONAL YOUTH CLUB

Your Best Travel Partner

Schedule an appointment to talk to an expert today at 7827956056 Or write as ankit@internationalyouthclub.org

For more information email us on:

- ankit@internationalyouthclub.org
- bookings@internationalyouthclub.org

Click to connect with us



Visit us on:

Website - <https://www.internationalyouthclub.org/>

Instagram - <https://www.instagram.com/internationalyouthclub/>

Facebook - <https://www.facebook.com/InternationalYouthClub.Org/>